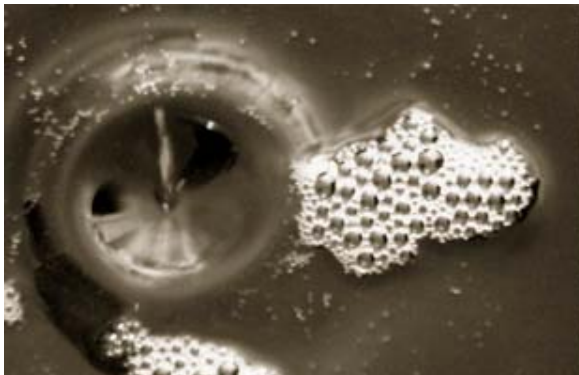


Tall Oil

Tomas Kåberger

PhD, Associate Professor
Acting Managing Director, TPS
Vice President Corporate Development, TallOil



What is relevant for decisions today?

- Potentials are very large compared to present use!
 - *In 20 years from now, bioenergy will contribute between 10 and 100 percent of the global, societal energy supply.*

What is relevant for decisions today?

- Potentials are very large compared to present use!
- Priorities:
 - Residues
 - Bi-products } 1/3 of global energy use (?)
- Multifunctional plantations
- Dedicated plantations

Ecological Challenges:

- Local air pollution
- Nutrient balances
- Nature preservation

Social Challenges

- Poverty reduction
- Rural economic development
- Land-less poverty

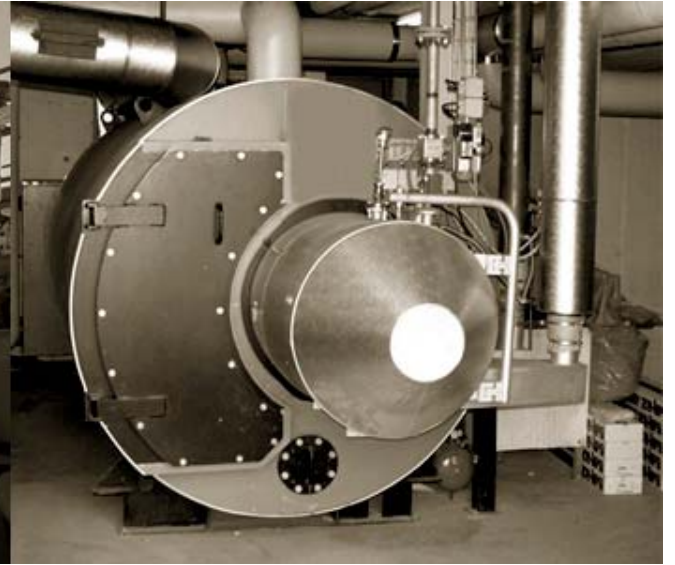
Economic conditions are sufficient today!

- Entrepreneurs
 - With knowledge
 - With know-how
 - With willingness to take risks

While handling:

- Transaction costs/Administrative costs
 - Eg CDM
 - Certification schemes
 - VAT
 - Custom-duty regulations...
- Supply-chain Co-ordination

- There will be competition, at the margin, with
 - Food
 - Industrial uses
- Are there reasons that will not be efficient?



Tall Oil

Tomas Kåberger

PhD, Associate Professor
Acting Managing Director, TPS
Vice President Corporate Development, TallOil

