

CO₂ separation from biogas upgrading

Philippe Lehmann | CO₂ Energie AG

Vienna | 17.10.2022

The logo for CO₂energie, featuring the text "CO₂energie" in a blue sans-serif font. The "CO₂" part is green, and the "energie" part is blue. The logo is positioned in the bottom right corner of the slide, which is a white rounded rectangle.

CO₂energie

Content

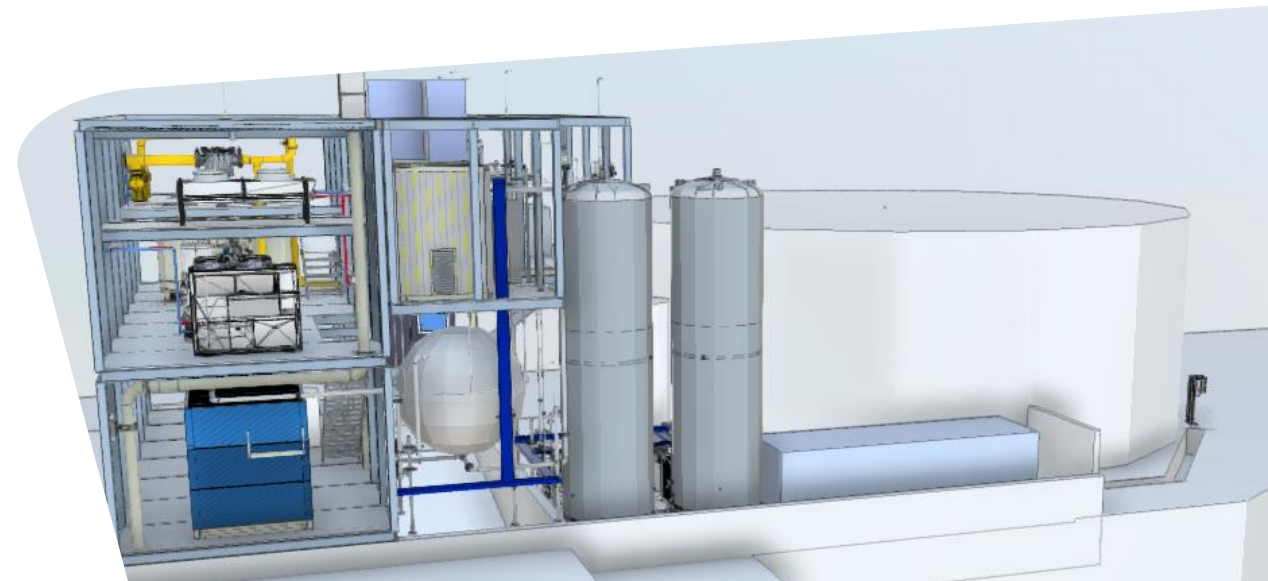
- 01** Introduction
- 02** Base Case Scenario
- 03** Project Case Scenario
- 04** Process
- 05** Value Chain

Introduction

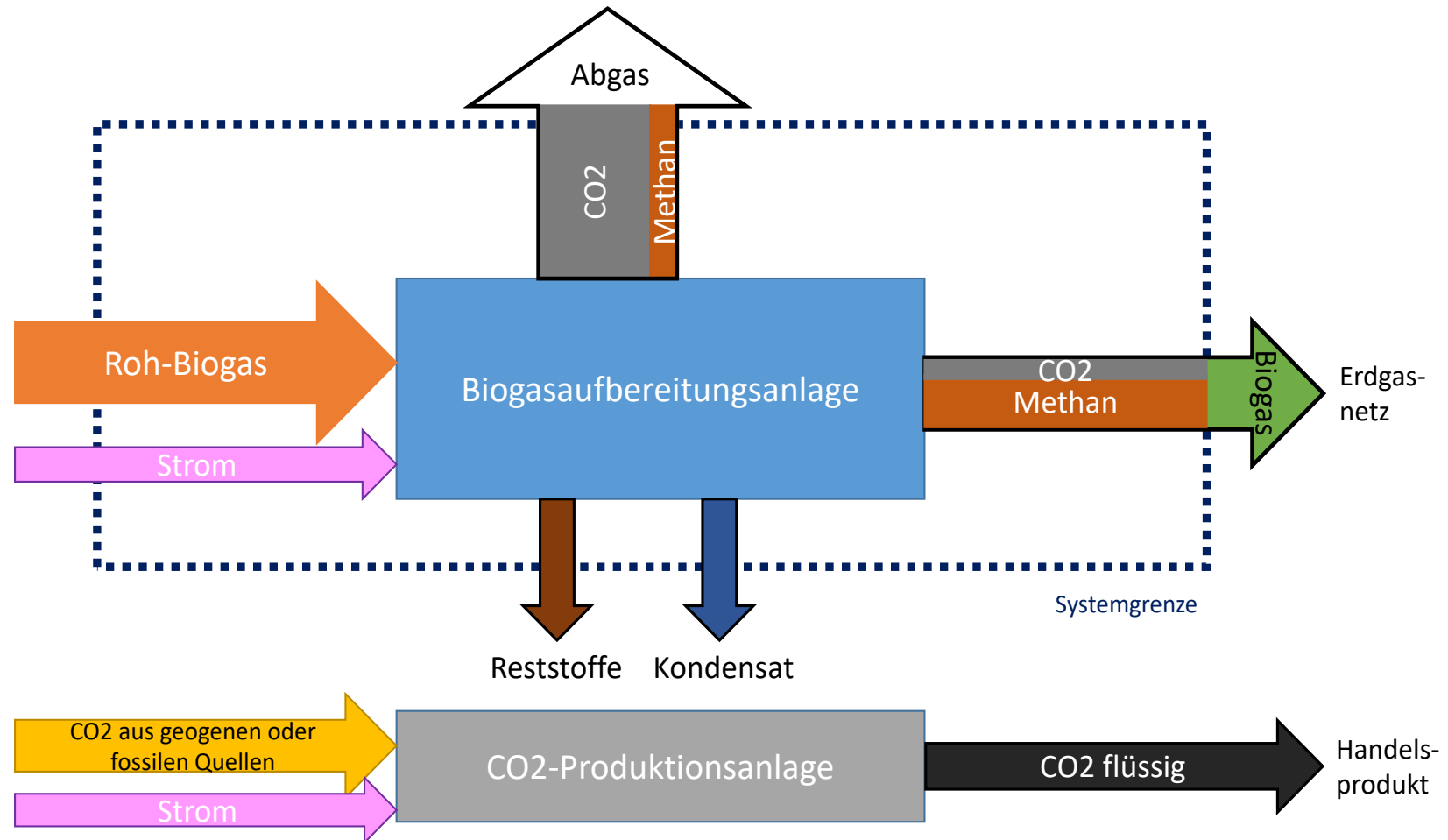
Initial situation & design data

- Biogas source: 80'000 t/a Food Waste
- CO₂ source: Biogas upgrading unit 800 Nm³/h
- > 30 Gwh production biomethane
- CO₂ specification:

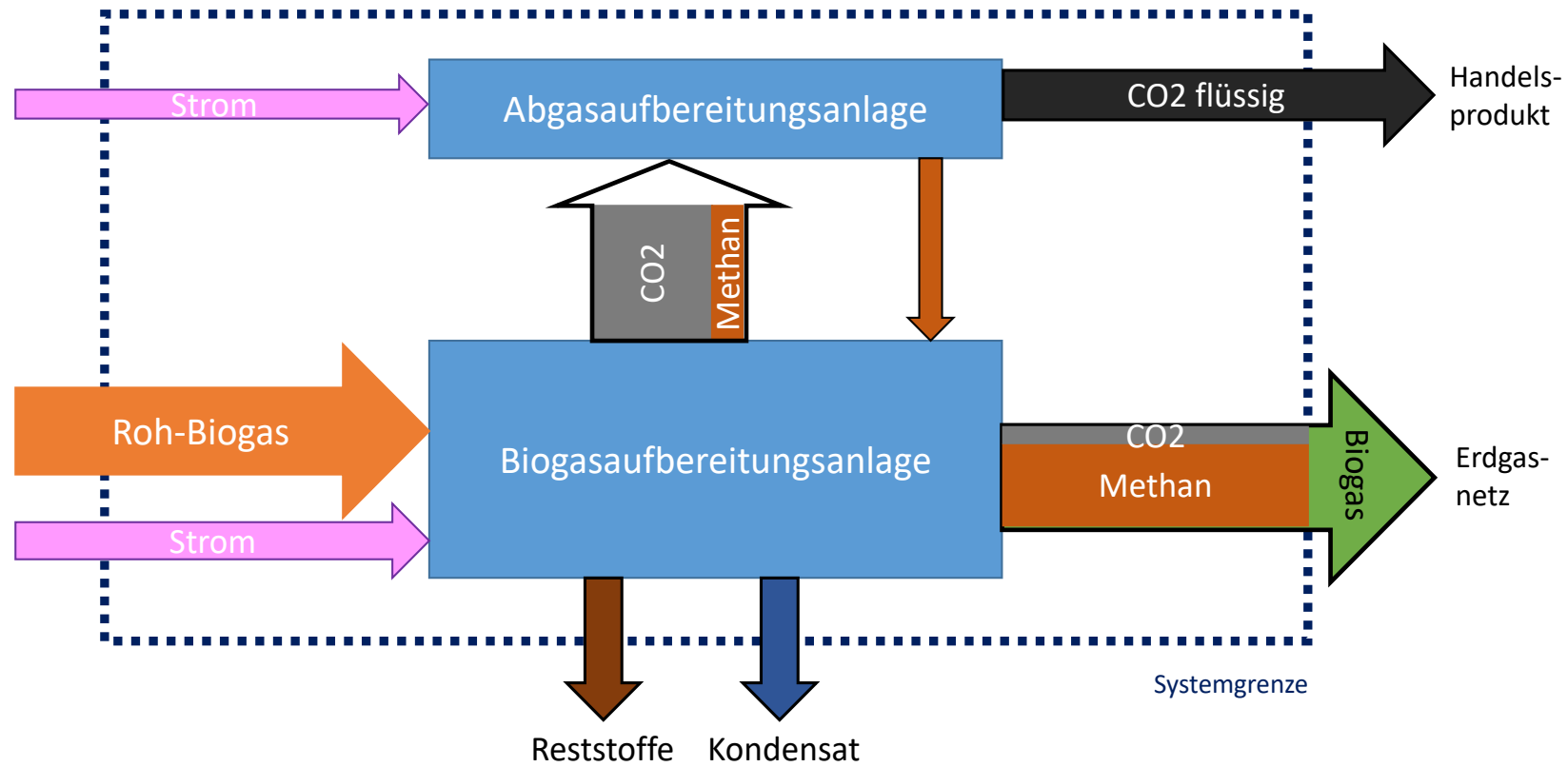
CO ₂ aus Biogasaufbereitungsanlage	Wert	Einheit
Volumen	max. 550	kg/h
CO ₂	min. 98.4	%
CH ₄	max. 1	%
Schwefel total	<0,2	ppm
Σ O ₂ /N ₂	<0.2	%
C ₂ +VOC	<20	ppm
Temperatur	<40	°C
Druck	0- 5	mbar



Base Case Scenario

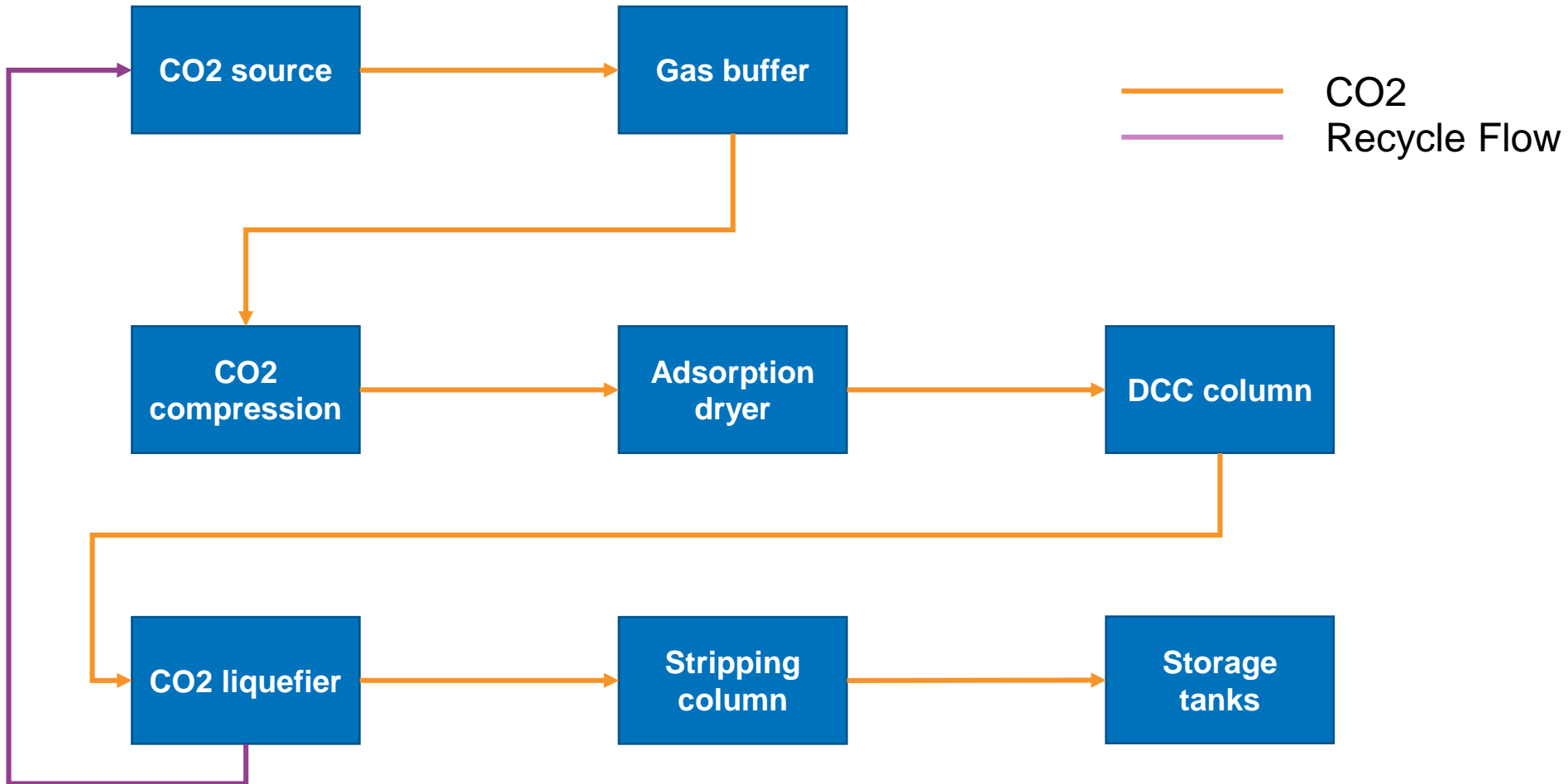


Project Case Scenario

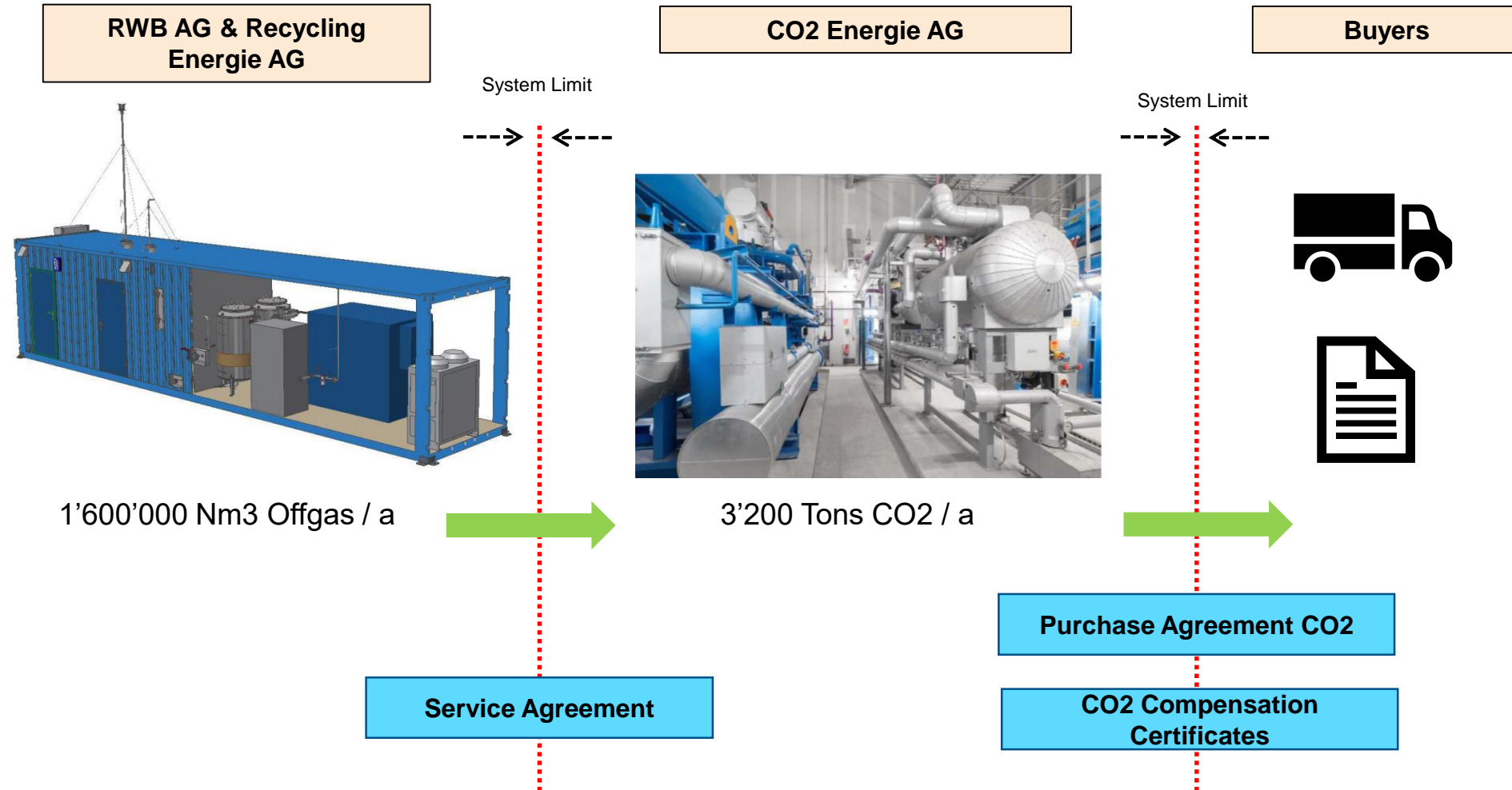


Process

Conditioning & Liquefaction



Value Chain



Contact



Philippe Lehmann
CO2 Energie AG
philippe.lehmann@co2-energie.ch

CO2 Energie AG
Haselstrasse 15
5400 Baden

CO₂energie